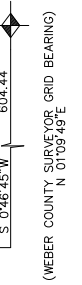


PART OF THE N.E. 1/4, SEC. 21, T.5N., R.1W., S.L.B. & M.
PLEASANT VALLEY ESTATES – PHASE 9

325

TAXING UNIT: 27

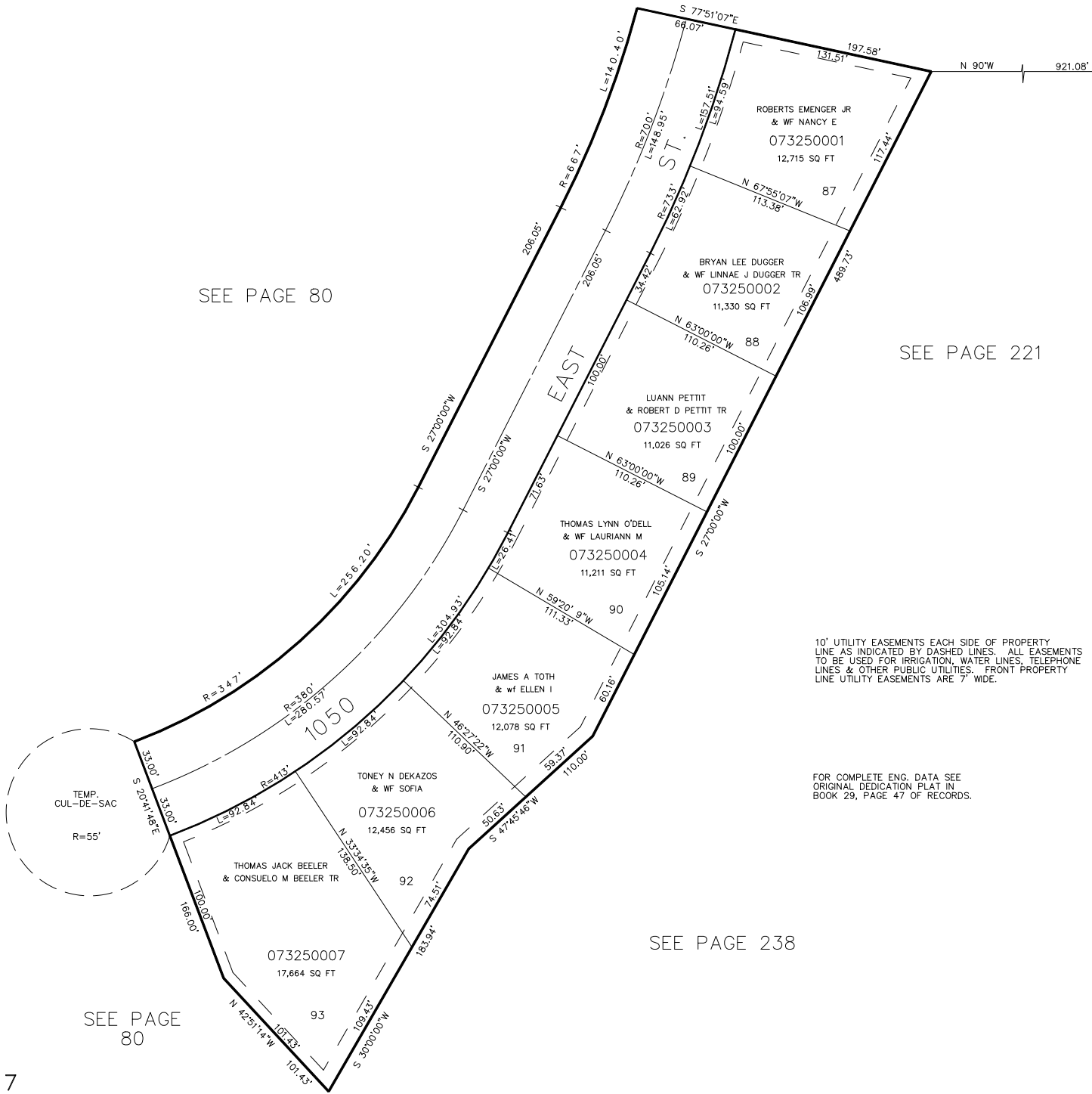
IN SOUTH OGDEN CITY
 SCALE 1"=50'



SEE PAGE 80

SEE PAGE 80

SEE PAGE 221



10' UTILITY EASEMENTS EACH SIDE OF PROPERTY LINE AS INDICATED BY DASHED LINES. ALL EASEMENTS TO BE USED FOR IRRIGATION, WATER LINES, TELEPHONE LINES, & OTHER PUBLIC UTILITIES. FRONT PROPERTY LINE UTILITY EASEMENTS ARE 7' WIDE.

FOR COMPLETE ENG. DATA SEE ORIGINAL DEDICATION PLAT IN BOOK 29, PAGE 47 OF RECORDS.

SEE PAGE 238

SEE PAGE 80